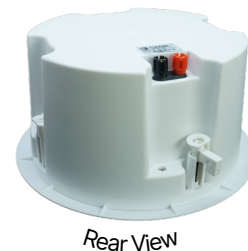


## Co-Axial Ceiling Speakers



### CS520

5" 20W 100V Line  
Co-Axial with Power Taps (Metal)

### CS630

6" 30W 100V Line  
Co-Axial with Power Taps (Metal)

### CS620

6" 20W 100V Line  
Co-Axial (ABS)

### CS840

8" 40W 100V Line  
Co-Axial (ABS)

**CS520** (5") and **CS630** (6") are premium co-axial ceiling speakers with aluminium grille for rust free installation metal back can for fire resistance. Its clamp-style mounting provide easy to install method. Designed for full-range sound in BGM and paging clarity with adjustable power taps, they are suitable for long-lasting performance in high-ceiling indoor spaces.

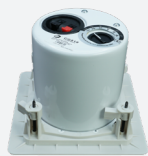
The **CS620** and **CS840** deliver professional coaxial sound without the premium price tag. Featuring 6" and 8" drivers, these speakers provide a wide frequency range for rich background music and clear announcements. With a built-in 100V transformer and easy-to-use clamp mounting, they offer a cost-effective, high-quality audio solution for large venues like banquet halls and retail spaces.

### Packing Information

	CS520	CS630
<b>Carton size</b>	500 (L) x 500 (W) x 400 (H) mm	570 (L) x 570 (W) x 400 (H) mm
<b>Gross weight</b>	18.50 kg	23.10 kg
<b>Qty/carton</b>	8 units per carton	8 units per carton

### Packing Information

	CS620	CS840
<b>Carton size</b>	565 (L) x 565 (W) x 370 (H) mm	640 (L) x 640 (W) x 395 (H) mm
<b>Gross weight</b>	23.30 kg	20.60 kg
<b>Qty/carton</b>	8 units per carton	8 units per carton



### CS518

5" 20W 100V Line Square Co-Axial Ceiling Speaker

**CS518** is a square ceiling speaker with a 5" 20W premium co-axial driver, metal baffle enclosure, and screw-clamp mounting. Ideal for spaces with recessed square ceiling designs such as offices and boutiques.

### Packing Information

<b>CS518</b>	
<b>Carton size</b>	530 (L) x 500 (W) x 410 (H) mm
<b>Gross weight</b>	19.10 kg
<b>Qty/carton</b>	8 units per carton

### Technical Specifications

	CS520	CS630	CS620	CS840	CS518
<b>Power rating</b>	20W 100V	30W 100V	20W 100V	40W 100V	20W 100V
<b>Diameter</b>	5" (125 mm)	6.5" (165 mm)	6.5" (165 mm)	8" (200 mm)	5" (125 mm)
<b>Cone type</b>	Co-axial with 1" tweeter				
<b>Driver impedance</b>	8 Ohm				
<b>Freq. response @ 1 kHz ± 3 dB</b>	100 - 18 kHz	75 - 18 kHz	80 - 18 kHz	90 - 19 kHz	100 - 18 kHz
<b>Sensitivity @ 1W/m (1 kHz ± 3 dB)</b>	86 dB	88 dB	88 dB	90 dB	85 dB
<b>Max SPL at rated output</b>	99 dB	102 dB	101 dB	106 dB	98 dB
<b>Power taps (100V line)</b>	2.5W / 5W / 10W / 20W	3.8W / 7.5W / 15W / 30W	20W 100V	40W 100V	2.5W / 5W / 10W / 20W
<b>Primary impedance (Ohm)</b>	4k / 2k / 1k / 500 Ohm	2.6k / 1.3k / 667 / 343 Ohm	500 Ohm	250 Ohm	4k / 2k / 1k / 500 Ohm
<b>Secondary impedance (Ohm)</b>	8 Ohm				
<b>Grille &amp; enclosure material</b>	Aluminium grille & Metal enclosure		Metal grille & ABS enclosure		Full Metal
<b>Cutting hole diameter (D)</b>	170 mm	185 mm	205 mm	240 mm	150 x 150 mm
<b>Physical dimensions (mm)</b>	205 (D) x 145 (H)	230 (D) x 150 (H)	240 (D) x 142 (H)	280 (D) x 142 (H)	180 (W) x 180 (H) x 135 (D)
<b>Net weight</b>	1.65 kg	2.15 kg	2.30 kg	2.10 kg	1.80 kg
<b>Colour</b>	White				

