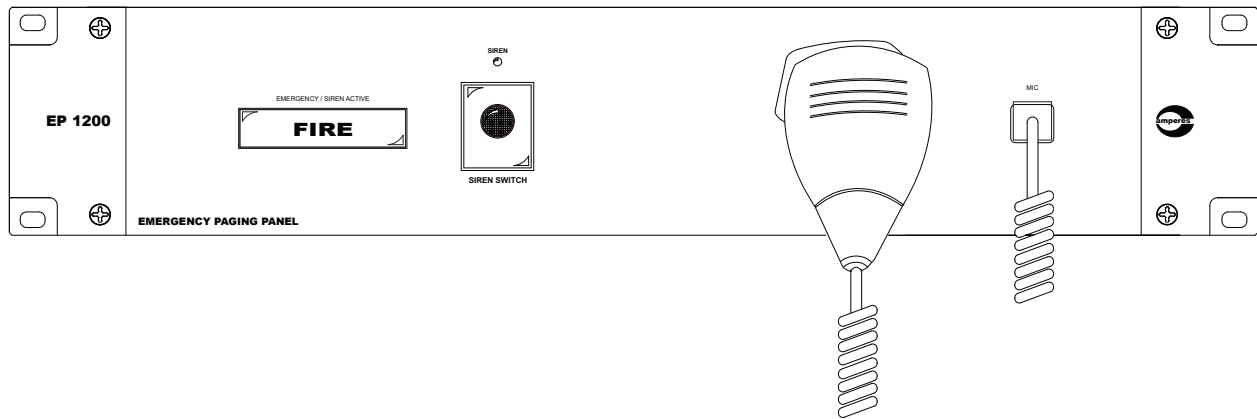




# INSTRUCTION MANUAL

## EP1200

Emergency Paging Microphone Panel



Thank you for choosing another quality product from Amperes Electronics

### *Product in Summary*

Emergency Paging Panel is an essential tool for firemen during emergency, allowing direct paging to all zones and bypassing any active BGM or paging in progress.

EP1200 is enhanced with communication port, enabling the unit to be used with iPX5101 MKII IP Client for a LAN based setup. This shall allow simultaneous emergency paging or siren activation for entire multiple sub racks available in the system.



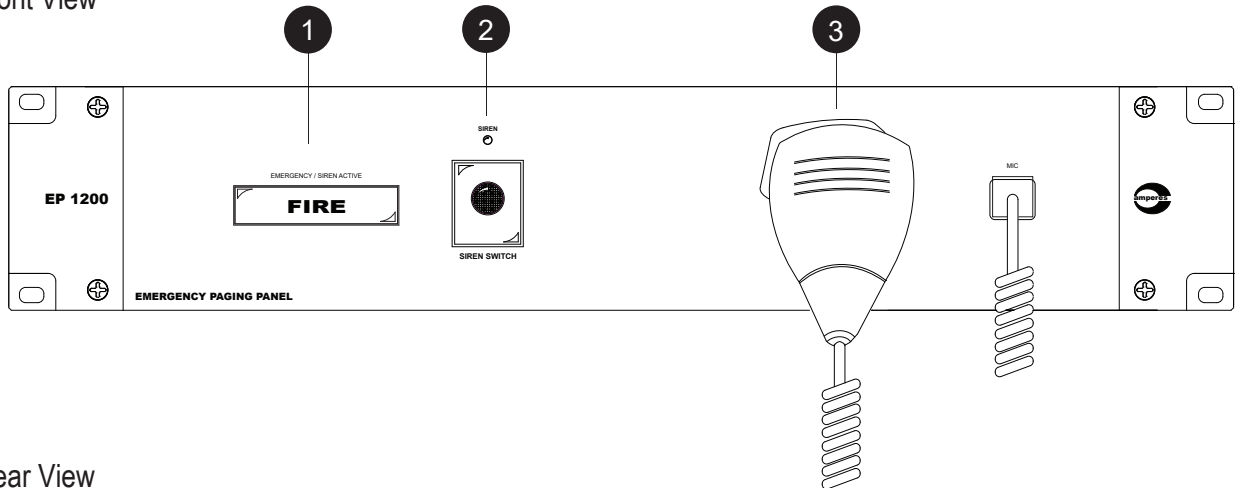
Scan to view catalogue and latest updates  
Ver 3 / 2024

In our support towards environment, we shall no longer print manuals to be accompanied with each product. Please view through browser and print them only when necessary.

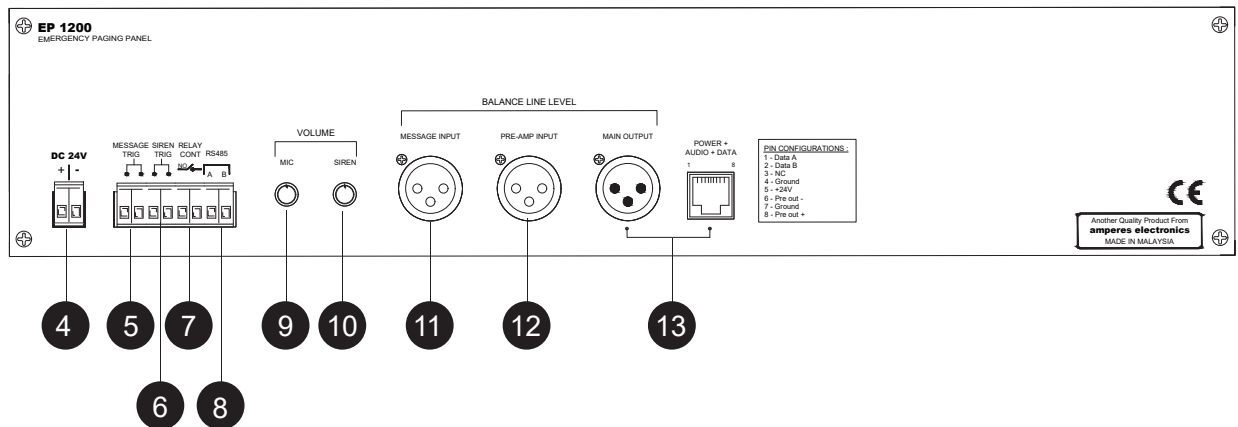


## Parts Identification

Front View



Rear View



### 1. FIRE INDICATOR

Whenever siren or external activation device is triggered, the FIRE indicator shall flash alongside with siren audio broadcast. Activate the paging microphone will also turn on the flashing.

### 2. SIREN SWITCH

Press the siren button shall activate the siren. FIRE indicator shall lit and the MIC switch relay contact (7) shall close. Press the siren switch again will turn Off the siren.

### 3. HANDHELD PAGING MICROPHONE

Pressing the microphone switch shall have priority over other inputs such as Sire, External Message input as well as normal paging or BGM feeds. To page, just pick up the handset, press the button and start talking. Releasing the switch, the previous operating mode shall resume.

### 4. 24V INPUT

The unit operates on 24V DC. It is preferred that the unit to be supplied directly from the uninterrupted power source, i.e. power supplies linked to back up batteries.

**Note :** Do not connect directly to the terminals of back up battery. It shall damage the equipment.

### 5. EXTERNAL MESSAGE TRIGGER PORT

External message player can be linked to it and can be broadcasted to the speakers when this port is triggered. A voltage free contact is recommended to trigger the message playback.

### 6. REMOTE TRIGGER PORT FOR SIREN

External sensor device such as heat detector or fire alarm interface device can be connected to this unit to activate the siren. The external device or switch must be voltage free to avoid damage to the unit. Two ways for the external switch to turn On/Off the siren:

- 1)  $A < 2s$  close-then-open to turn On ;  $A < 2s$  close-then-open to turn Off
- 2)  $A > 2.5s$  close to turn On, an open to turn Off

### 10. DC INPUT TERMINAL

24V DC back up supply from batteries are connected to these connectors. Use suitable cable size to avoid overheating of cables.

### 11. AUDIO LINE OUTPUTS

Outputs from the units are available in 100 / 70V line and also for 4 Ohm speakers. At any one time, connect only one terminal.

### 12. STANDBY AMPLIFIER CONNECTOR

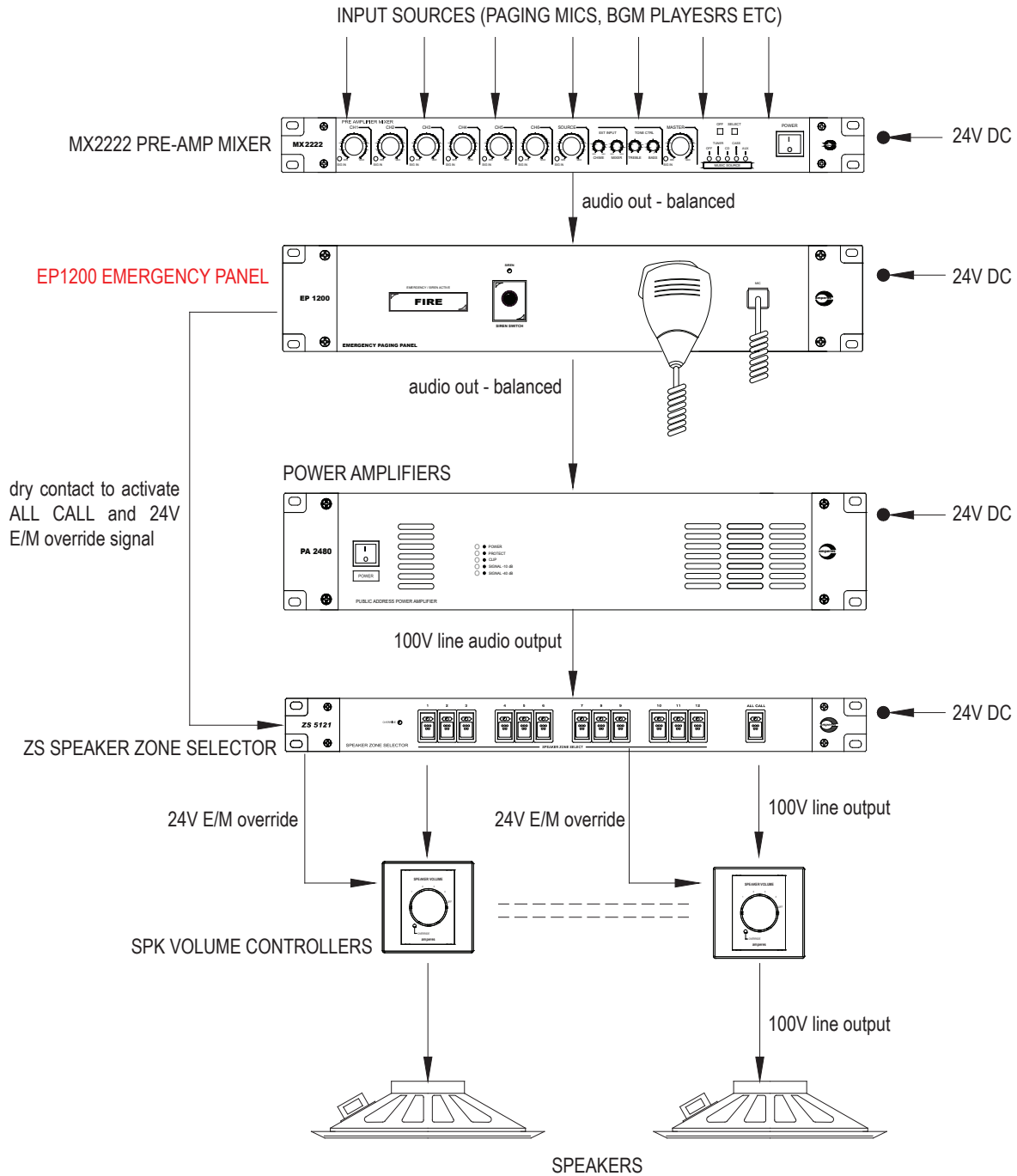
QP2000 Series are equipped with Auto Fault Sensing feature with Standby Fault Changeover relay incorporated. Outputs from a standby unit is connected to these terminals and connected to the next duty pack in series. Please refer to the section "Connecting Standby Amplifier".

### 13. DATA AUDIO OUTPUT

Audio output from the detector is balanced line output level. RJ45 connector consists of audio, data and power with the following pin configuration :

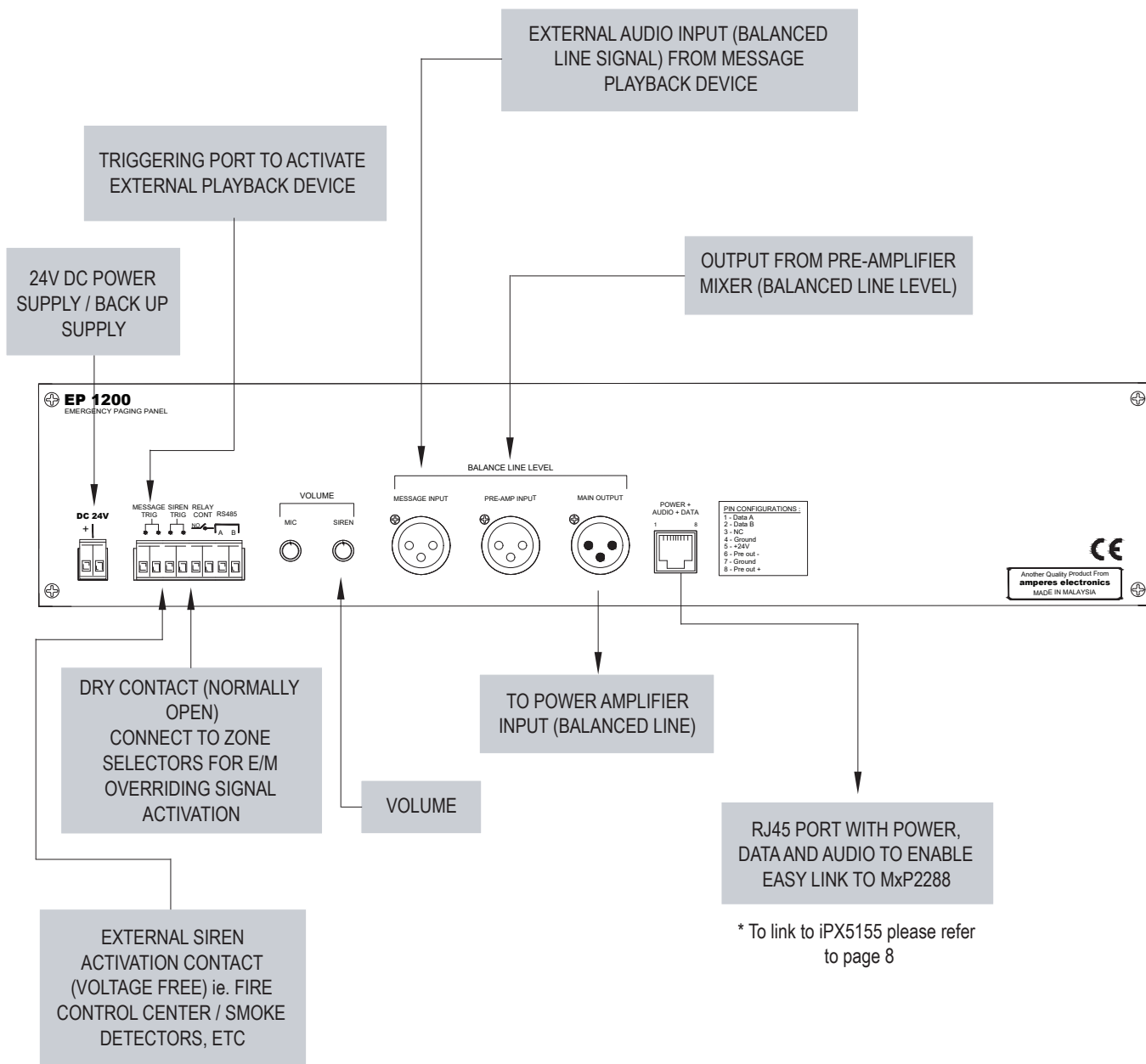
Pin 1 - Data A	Pin 5 - +24V Supply
Pin 2 - Data B	Pin 6 - Audio -ve output
Pin 3 - NC	Pin 7 - Ground
Pin 4 - Ground	Pin 8 - Audio +ve output

## Schematic Diagram

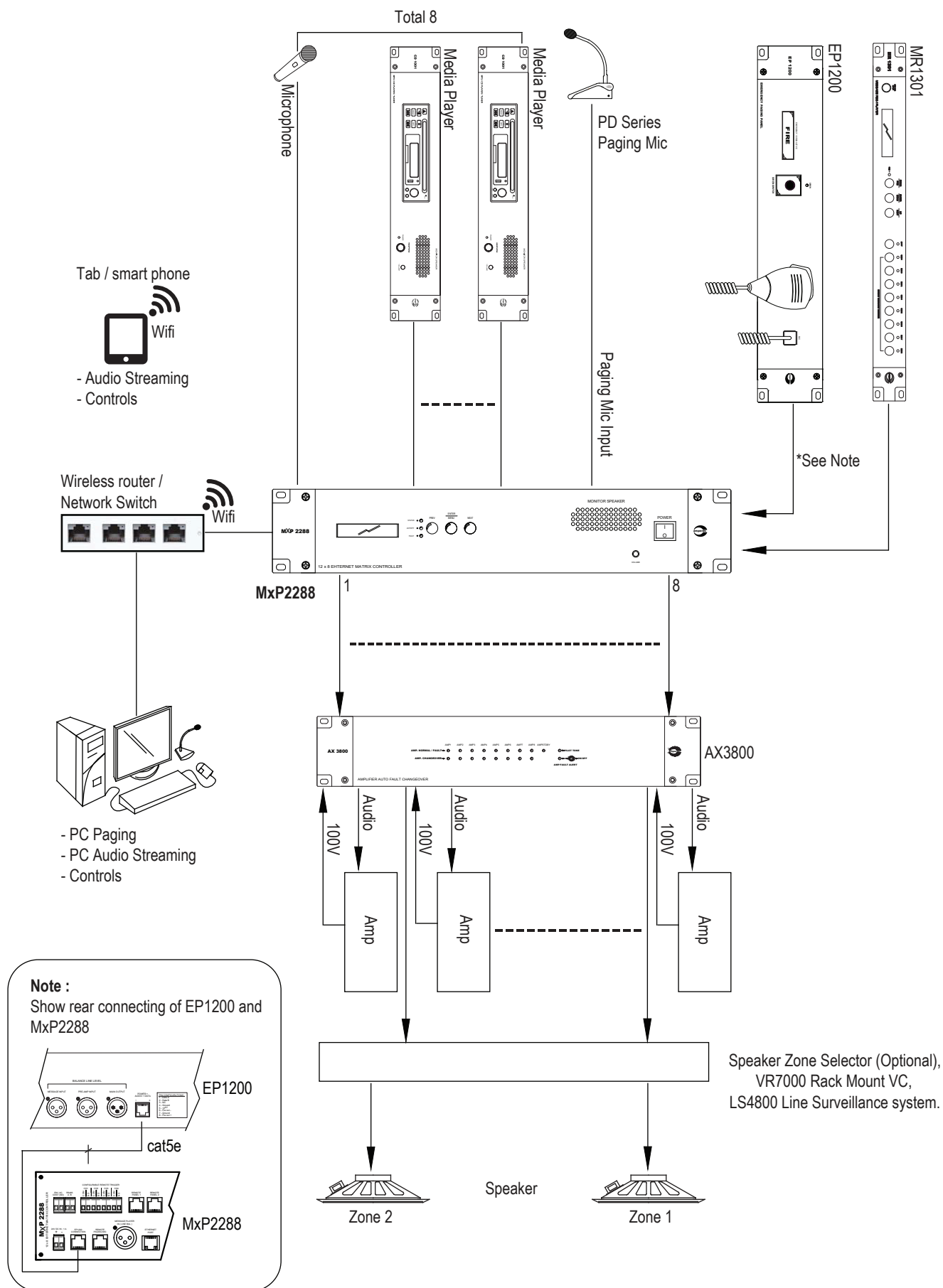


The schematic shown above is typical for most conventional installations. Audio output from mixer shall go through EP1200 prior to amplifier inputs to emergency paging being highest priority.

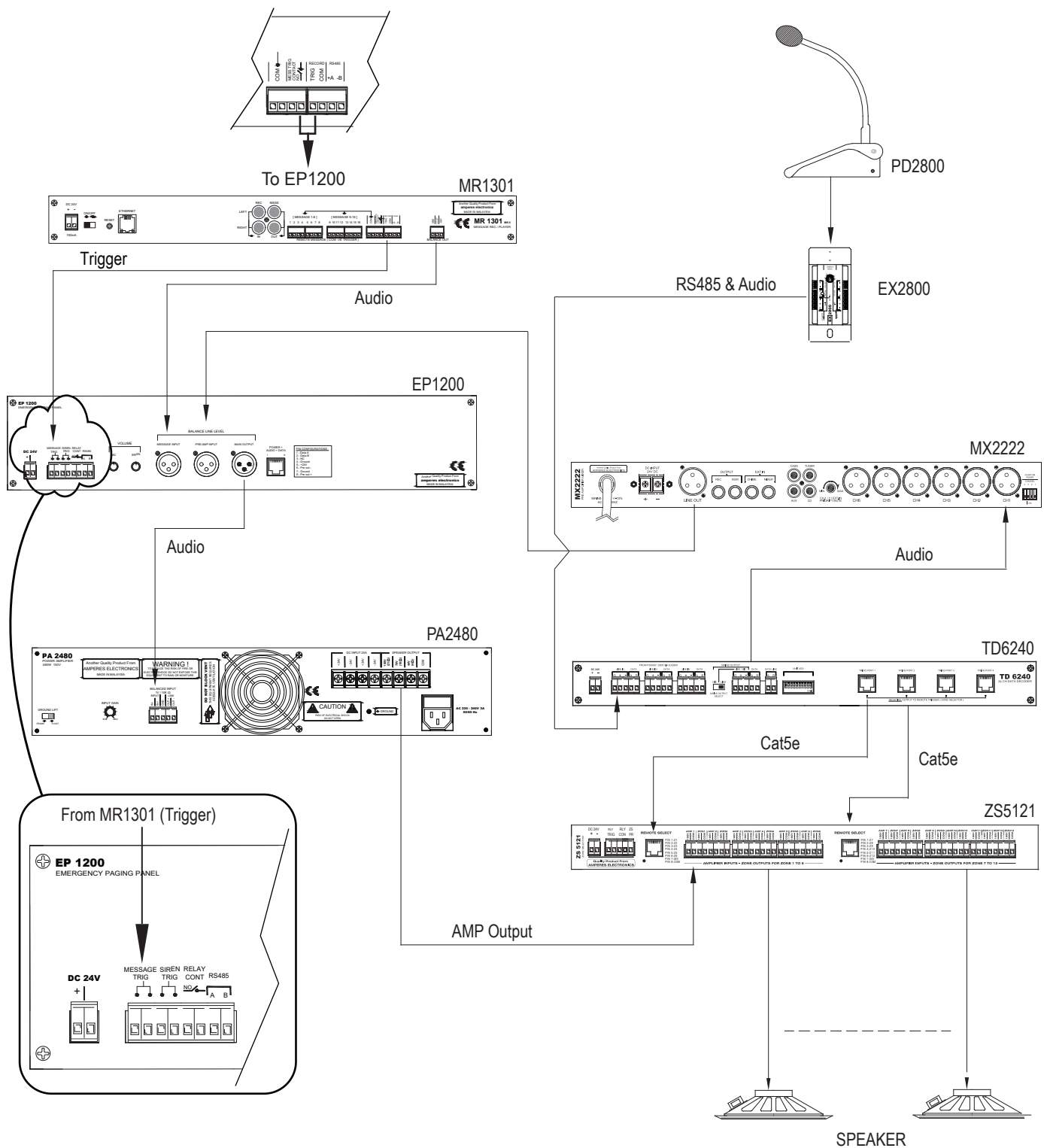
## Connecting The Unit



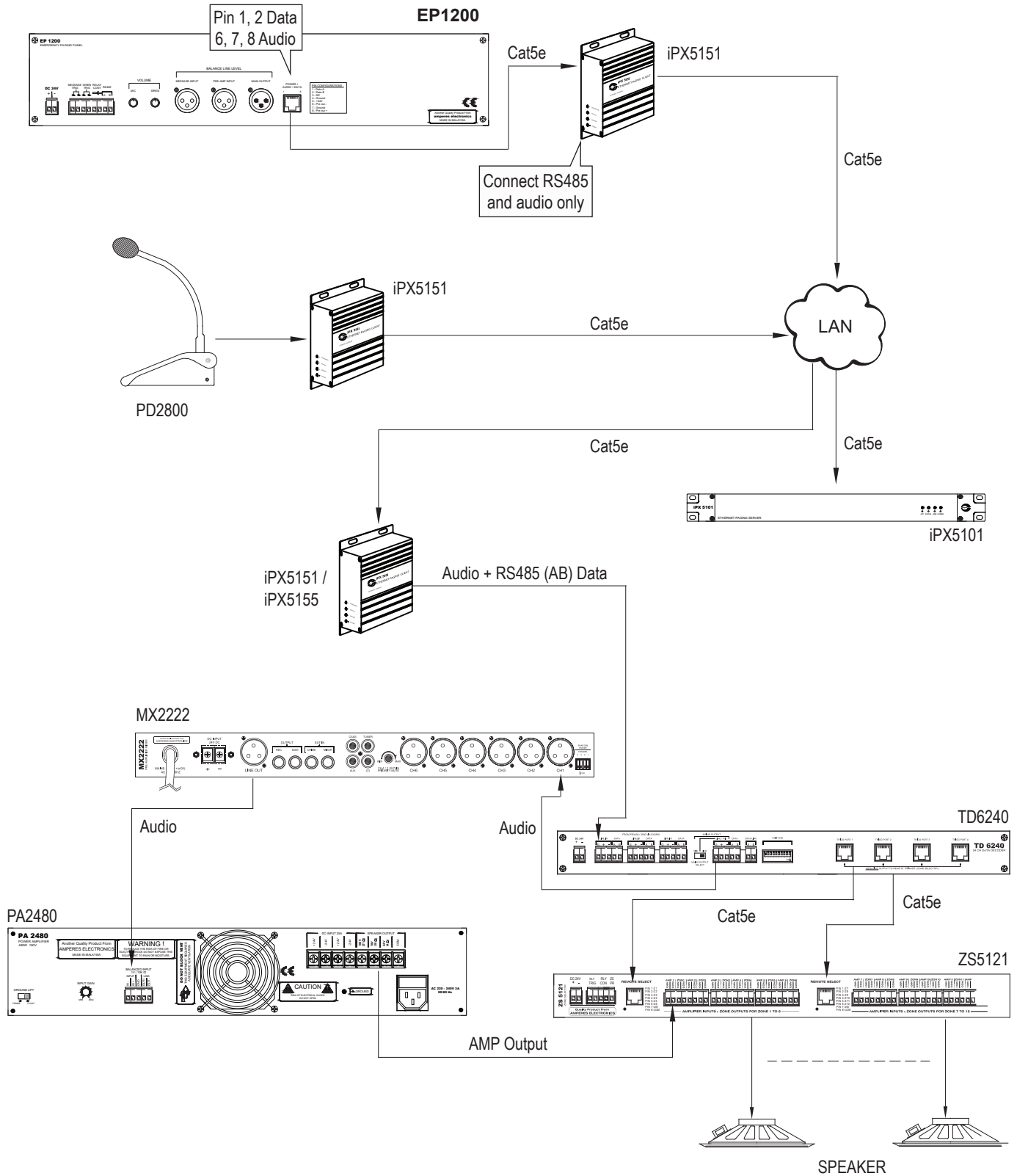
## Connecting The Unit - Matrix System



## Connecting The Unit - Conventional System



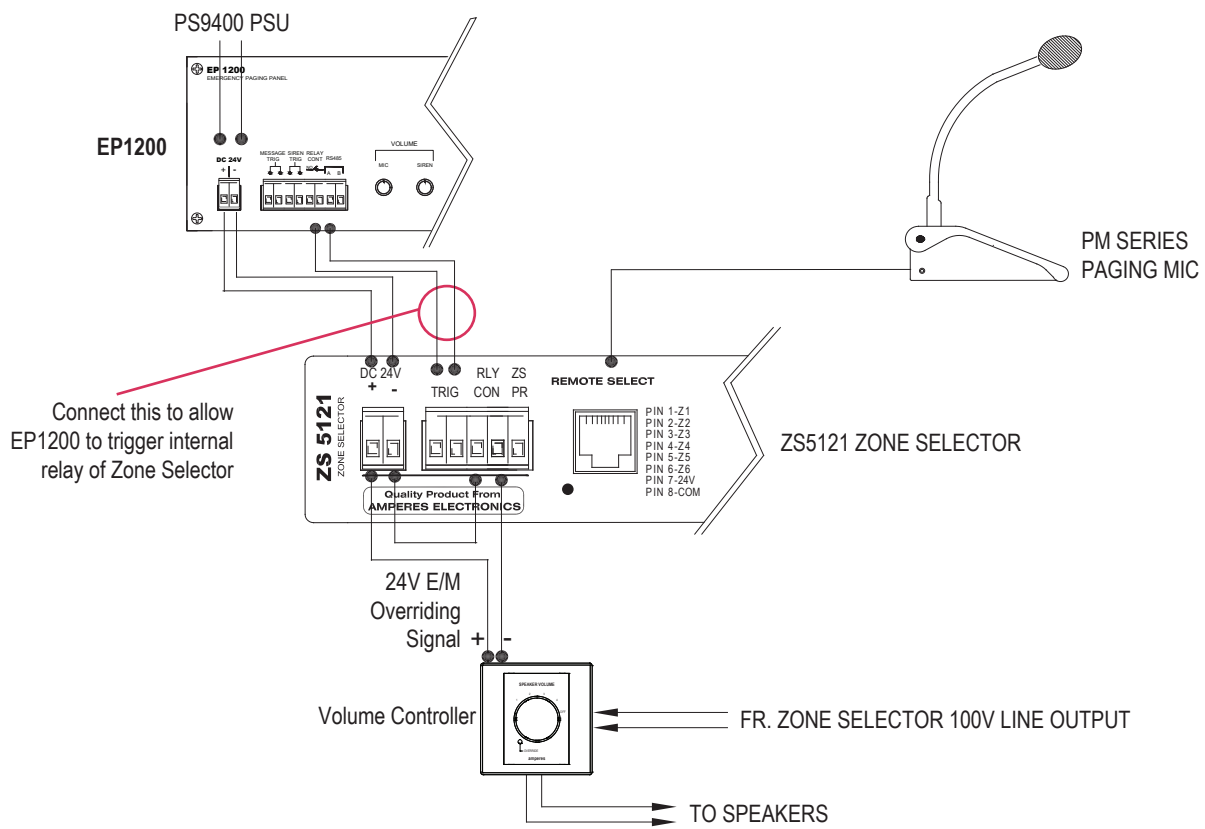
## Connecting The Unit : IP Setup



EP1200, which is installed at main rack for a large system using IP as communication interface, shall be able to override remote buildings / system as similar to single rack installation.



## Configuring ALL CALL and E/M Overriding



The above diagram shows detailed connections for using EP1200 to override volume control and activating ALL CALL at zone selector.

## Summary of Features

- Built in siren tone generator (constant signal)
- Visual FIRE indicator
- External voice message activation
- Dual mode siren tone activation
- Dry contact when paging mic is activated
- Priority paging via front panel microphone, bypassing all other audio sources
- Output level controls for siren and message / paging microphone

## Technical Specifications

Power requirement	24V DC
Power consumption	3.5W
MICROPHONE	
Mic sensitivity	-72 dB Omni directional
Impedance	600 Ohm
Frequency response	300 ~ 8 KHz
SIREN	
Siren frequency	Continuous at 8 KHz
Siren duration	Continuous when activated
Siren activation	Front test switch / remote contact
Input channel	Pre-amplifier output, message recorder
Output level	Balanced line out (1.2V)
Priority sequence	Paging mic - message - siren - pre amp in
Indicators	Front FIRE with backlight illumination
Dimension (WxHxD)	482 x 88 x 180 mm
Weight	3.0 kg

## Warranty Conditions

Only Amperes Electronics Service Centres are allowed to make warranty repairs : a list of Amperes Electronics authorized service centres may be asked by the purchaser or send directly to Amperes Electronics Sdn Bhd at 70 Jalan Industri PBP3, Tmn Perindustrian Pusat Bandar Puchong, 47100, Puchong, Selangor. This warranty is not valid if repairs are performed by unauthorized personnel or service centres.

### Eligibility

Amperes Electronics' Service Center will accept any device send in for repair / checking purchased from any of our dealers. Some dealers may have the right to refuse repair / service / checking for any device not purchased from them directly.

### Coverage

This warranty covers only repairs and replacement of defective parts, due to defects of components or workmanship during product warranty period. For any product purchased exceeding the warranty period, a cost of repair shall be presented and will only proceed to rectifications upon agreed value. If the owner decides not to proceed, a minimal checking fees will be applied.

### Exclusions

This warranty does not cover damages caused by misuse, negligence in application as well as using the product with power supply voltage other than shown on the product, or any other power supply source / adapter not recommended by the manufacturer.

This warranty does not cover damages caused by fire, earthquakes, floods, lightning and every cause not directly related to the unit.

This warranty certificate is valid only for the described product, and is not valid if modifications are made on this certificate or identification labels applied to the unit or any other modifications to the physical unit other than its intended usage.

### Duration / Warranty Period

This warranty covers all the material and manufacturing defects and is valid for a period of 36 months from the date of purchase or for a specified period in countries where this is stated by a national law. In this case, the extension is valid only in the country where the product is purchased.

### Cost of Claiming Warranty

Cost and risk of transportation as well as removal and installation of the product from the main system are for the account of the purchaser. This warranty shall not extend to the replacement of the unit.

### Limitations

This warranty does not include any indemnity in favor of the purchaser or the dealer for the period out of use of the unit, moreover the warranty does not cover any damages which may cause to the people and things during the use of the product. Our liability is limited to the cost of the product

Amperes Electronics Sdn Bhd is not obliged to modify previously manufactured products under warranty if the design changes or improvements are made.

The purchaser is deemed to agree to the above warranty conditions once the product packaging is unpacked., Otherwise the product shall be returned to the seller in proper original condition.

## Disclaimer

Information contained in this manual is subjected to change without prior notice and does not represent a commitment on the part of the vendor. Amperes Electronics Sdn Bhd shall not be liable for any loss or damages whatsoever arising from the use of information or any error contained in this manual.

It is recommended that all services and repairs of this product to be carried out by Amperes Electronics or its authorized service agents.

Amperes products must only be used for the purpose they were intended by the manufacturer and in conjunction with this operation manual.

Amperes Electronics Sdn Bhd cannot accept any liability whatsoever for any loss or damages caused by service, maintenance or repair by unauthorized personnel, or by use other than that intended by the manufacturer.



Registered to certificate: 16895/ A/ 0001/ UK/ En



AMPERES ELECTRONICS SDN BHD  
MADE IN MALAYSIA  
Published : DEC 2024