

FI6000 MKII

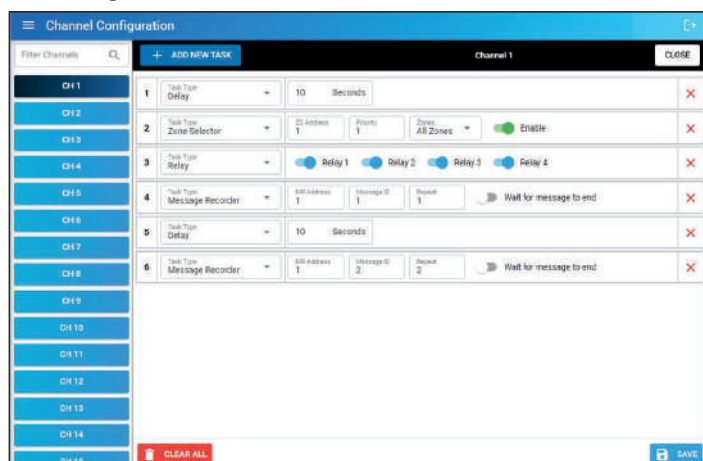
Fire Alarm Interface

INPUT SOURCES & CONTROLS



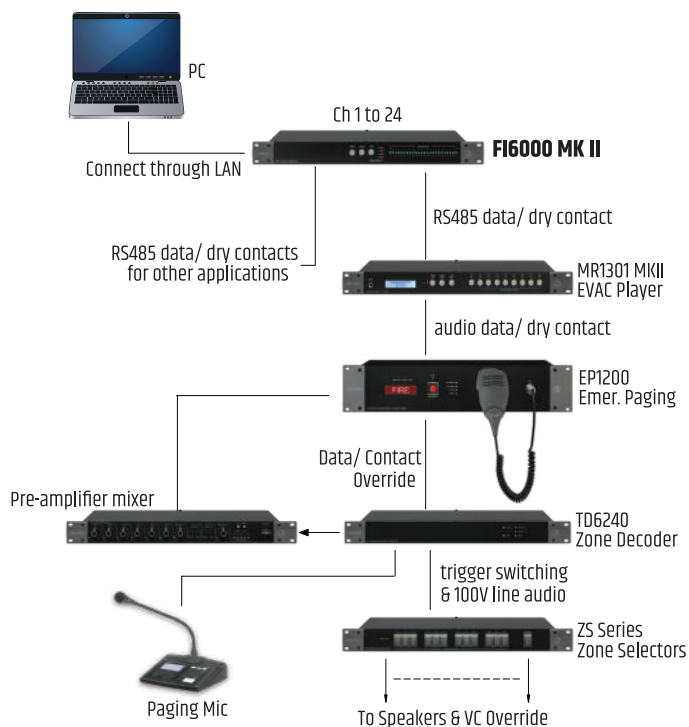
FI6000 MK II is an improvised phase evacuation controller, which is an essential intermediary device between Fire Alarm Panel and PA System. It enables zone controls and playback of various EVAC messages in preprogrammed sequences of activities. The orderly and automated activities upon receiving signals from Fire Alarm Panel (FAP) are part of compliance to EN54 or BS5839 Part 8 standards.

Channel configuration interface



- **User friendly GUI**
- **Bi colour LEDs** for easy identification of status
- **LAN** connectivity for ease of setup and controls
- Available in **24 channels**
- Integrated with Amperes products via **RS485** and **dry contacts**
- Most suitable Fire Alarm Interface for **Phase Evacuation** activities

Application Schematic



Technical Specifications

Input voltage	24 V DC; 1A
Power consumption (all triggered)	21W; 0.9A
Input channels	24 ports
Trigger method	Dry contact, NO
Output channels (dry contacts)	4
Output contact rating	3A
Output contact models	ON, OFF
Contact connectors	Mini Phoenix
Indicators	Channel bi colour LED Dry contact LED
Communications	RS485; 19.2 kbps LAN 10/100 Base T
User interface	Web browser: Google, Firefox
Dimensions (W x H x D)	482 x 44 x 180 mm
Weight	1.90 kg

Packing Information

Carton size : 555 (L) x 295 (W) x 95 (H) mm
Gross weight : 2.55 kg
1 unit per carton

